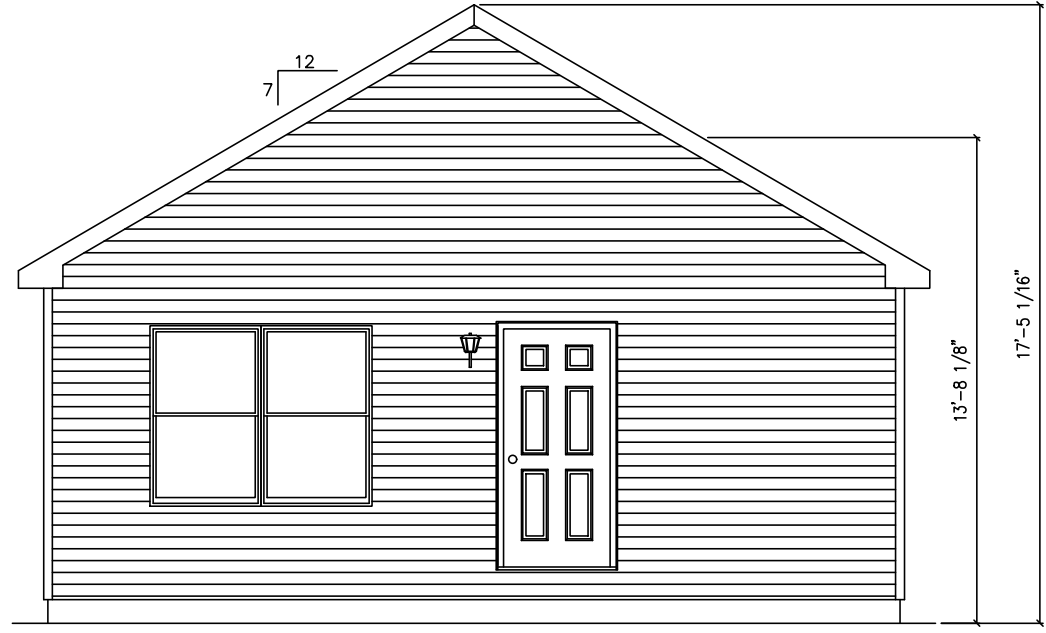


FRONT

24' x 42' Ranch
1008 sq. ft.

CEILING
8'-0"
FLOOR



CEILING
FLOOR

DATE:		3/18/2026		STATUS:		PR	
DATE:		3/23/26		STATUS:		REV PR	
DRAWN BY:		SWT		DRAWN BY:		JRT	
DRAWN BY:		JRT		DRAWN BY:		JRT	
DATE:		3/18/2026		STATUS:		PR	
DATE:		3/23/26		STATUS:		REV PR	
DRAWN BY:		SWT		DRAWN BY:		JRT	
DRAWN BY:		JRT		DRAWN BY:		JRT	

11-PRESTIGE RANCH
FRONT ELEVATION

MBSP
MODULAR BUILDING SYSTEMS OF PA

Professional Building Systems
72 East Market Street
Middleburg, PA 17842
(888) 553-1414
WWW.PBSMODULAR.COM

PROFESSIONAL BUILDING SYSTEMS, INC.

BUILDER	PROS EDGE QUALITY HOMES L	CUSTOMER	LITTLETON AD
CITY	GEORGETOWN	COUNTY	ESSEX
WIND SPEED	117 MPH	VULT	50
ORDER NO.	126659	SERIAL NO.	117 MPH VULT
		SNOW LOAD	50
		STATE	MA
		SQ. FT.	1
		FILE NO.	P126659(110)

JOHNT 3/23/2026 11:12:02 AM
SALES DRAWING FOR PRELIMINARY PRICING ONLY
THIS PLAN HAS NOT BEEN REVIEWED FOR LOCAL/STATE CODES

ACTUAL HOUSE MAY VARY FROM ELEVATION-ACCESS TO GRADE ON-SITE BY BUILDER